

# 2010 Census Data

## Miami-Dade School Board Districts



Prepared for  
the Miami-Dade County School Board



by Miami-Dade Department of Planning and Zoning, Research Section  
May 2011

## Introduction

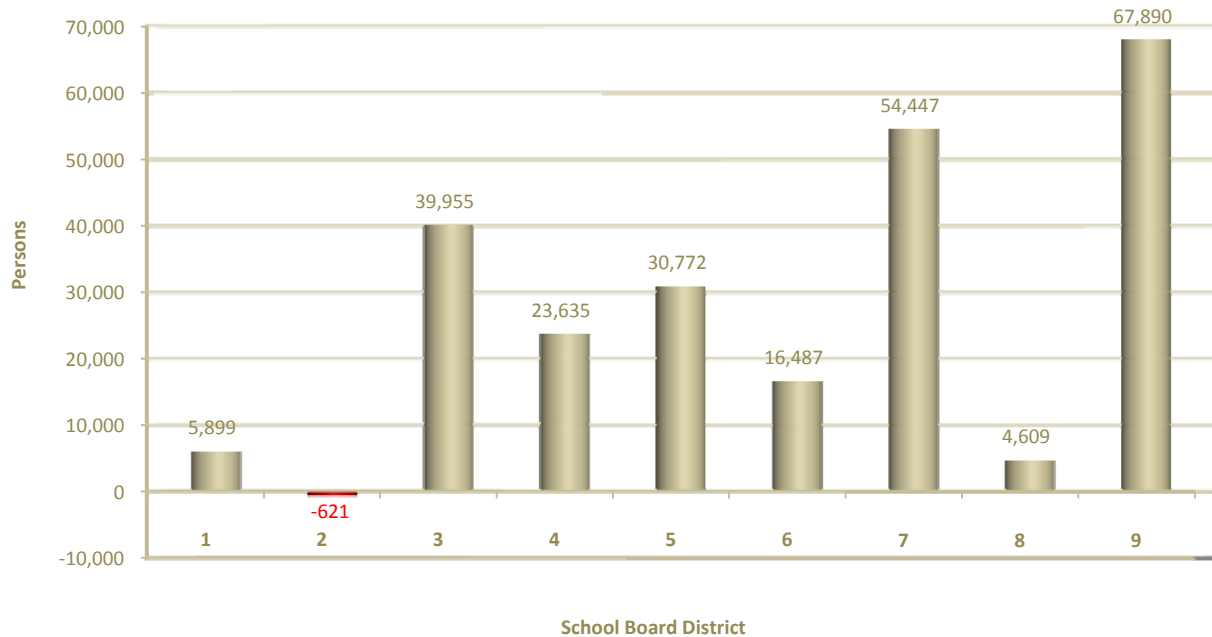
On March 17, 2011 the U.S. Census Bureau released the 2010 Census data for the state of Florida and local areas. The following provides a look on population, race and ethnicity, and age groups by school board district in Miami-Dade County.

## Population

Based on Census 2010 figures, the population in Miami-Dade continued to increase during the past decade from 2,253,362 in 2000 to 2,496,435 in 2010, up by 10.8 percent. This growth trend was also seen in all school board districts, except for District 2, where it dropped by less than half a percentage point (see Figures 1 and 2, Table 1 and Map 1). The largest increase in population was seen in District 9, from 252,594 persons in 2000 to 320,484 persons in 2010.

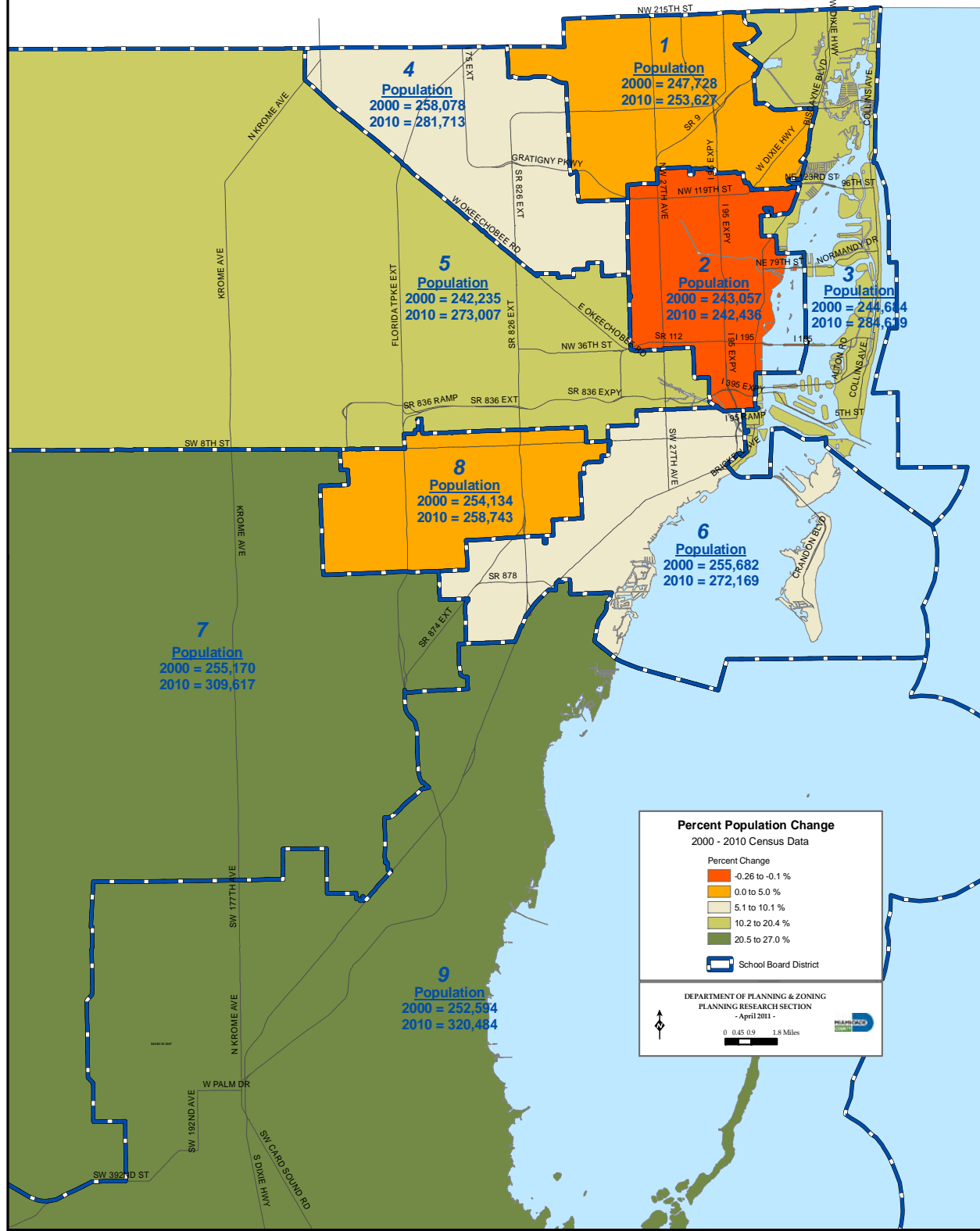
*Eight of nine Miami-Dade school board districts saw an overall increase in population between 2000 and 2010.*

**Figure 1.**  
**2000 - 2010 Change in Total Population,**  
**by School Board District, Miami-Dade County**

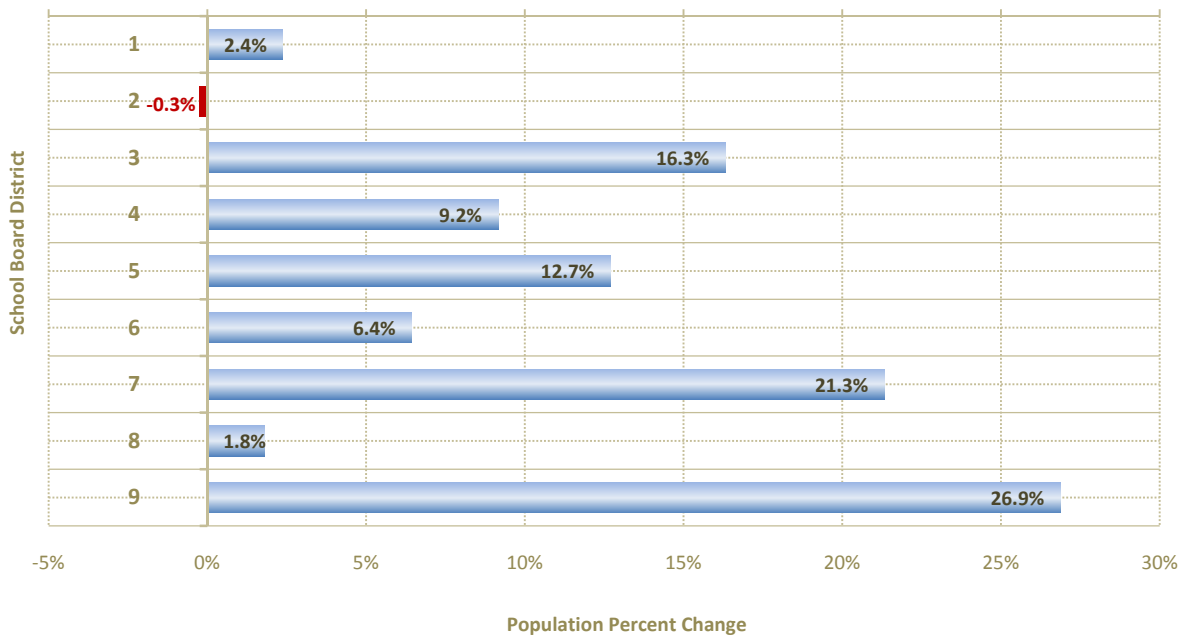


Source: U.S. Census Bureau, Census 2000 and Census 2010, PL 94-171, Miami-Dade County, Department of Planning and Zoning, Research Section, May 2011.

### MAP 1. PERCENT POPULATION CHANGE BY SCHOOL BOARD DISTRICT MIAMI-DADE COUNTY, FLORIDA 2000 - 2010



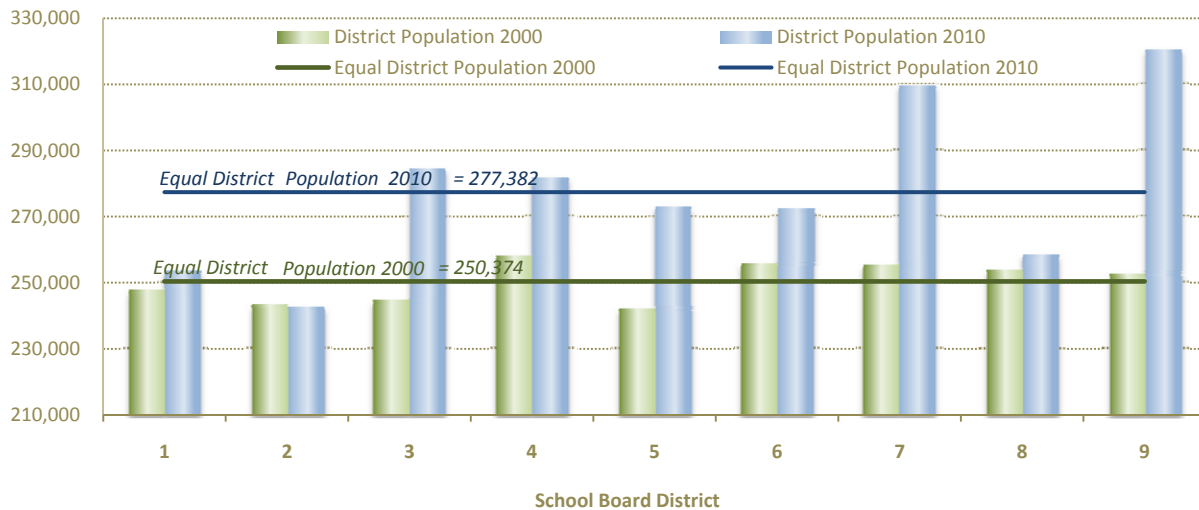
**Figure 2.**  
**2000 - 2010 Population Change, Percent,**  
**by School Board District, Miami-Dade County**



Source: U.S. Census Bureau, Census 2000 and Census 2010, Miami-Dade County, Department of Planning and Zoning, Research Section, May 2011.

There was a double-digit population growth in four school board districts with District 9 leading the list at 26.9 percent, District 7 following at 21.3 percent, and District 3 third at 16.3 percent. These changes in district population place individual school board districts in a different position than in 2000. In particular, Figure 3 shows that in 2010, unlike in 2000, over half of the districts are significantly below the equal apportionment level based on census data.

**Figure 3.**  
**Population Distribution by School Board District ,**  
**Miami-Dade County, 2000 and 2010**



Source: U.S. Census Bureau, Census 2000 and Census 2010, PL 94-171, Miami-Dade County, Department of Planning and Zoning, Research Section, May 2011.

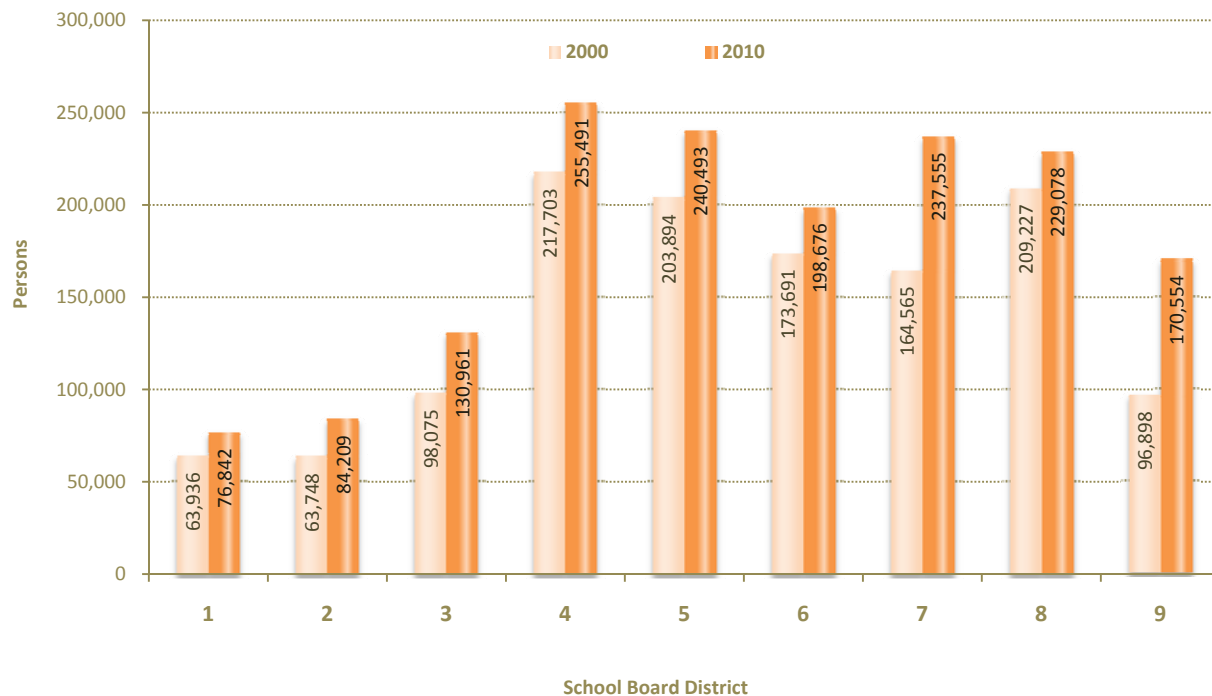
## Race and Ethnicity

### Hispanics

During the period from 2000 to 2010 the Hispanic population grew rapidly resulting in Hispanics today accounting for 65 percent of the County population. This is reflected at the school board district level, where Hispanic persons increased at a rate varying from 10 to 76 percent (see Table 2 and Figure 4). In 2010, the largest number of Hispanics was in District 4 at 255,491. District 5 and District 7 followed, at near equal levels, with 240,493 and 237,555 persons of Hispanic or Latino origin, respectively. While the fewest Hispanics lived in District 1 and District 2, in 2010 their number grew above 75,000 in each of these districts. In relative terms, the most important increase of Hispanics during 2000 – 2010 was in District 9, by 76 percent. District 7 is second, with an impressive 44 percent growth of Hispanic population since 2000.

*Over the past ten years the number of Hispanics increased in all districts, while Not Hispanic Whites decreased in all but one district. At the same time, the picture for Not Hispanic Blacks was mixed.*

**Figure 4.**  
Population of Hispanic or Latino Origin  
by School Board District, 2000 and 2010



Source: U.S. Census Bureau, Decennial Census 2000 and Census 2010, PL 94-171, Miami-Dade County, Department of Planning and Zoning, Research Section, May 2011.

# 2010 Census Data

## Non Hispanic Whites

Over the past decade the Not Hispanic White population declined. In 2000 there were 465,772 persons, while by 2010 this figure declined to 383,551, a loss of 82,221 persons. This represents a 17.7 percent decline over the past ten years. As a result, the Not Hispanic White population was reduced to 15.4 percent of the total population. This is seen at the school board district level, where District 3 registered an increase in Not Hispanic Whites by only 0.2 percent. This district has the largest number of not Hispanic White persons at 116,724 in 2010. Five districts 1, 4, 7, 8, and 9, showed a decline of over 25 percent. Not Hispanic Whites in District 7 declined by 17,856, the largest numerical decrease.

**Figure 5.**  
**Not Hispanic White Population,**  
**by School Board District, 2000 and 2010**

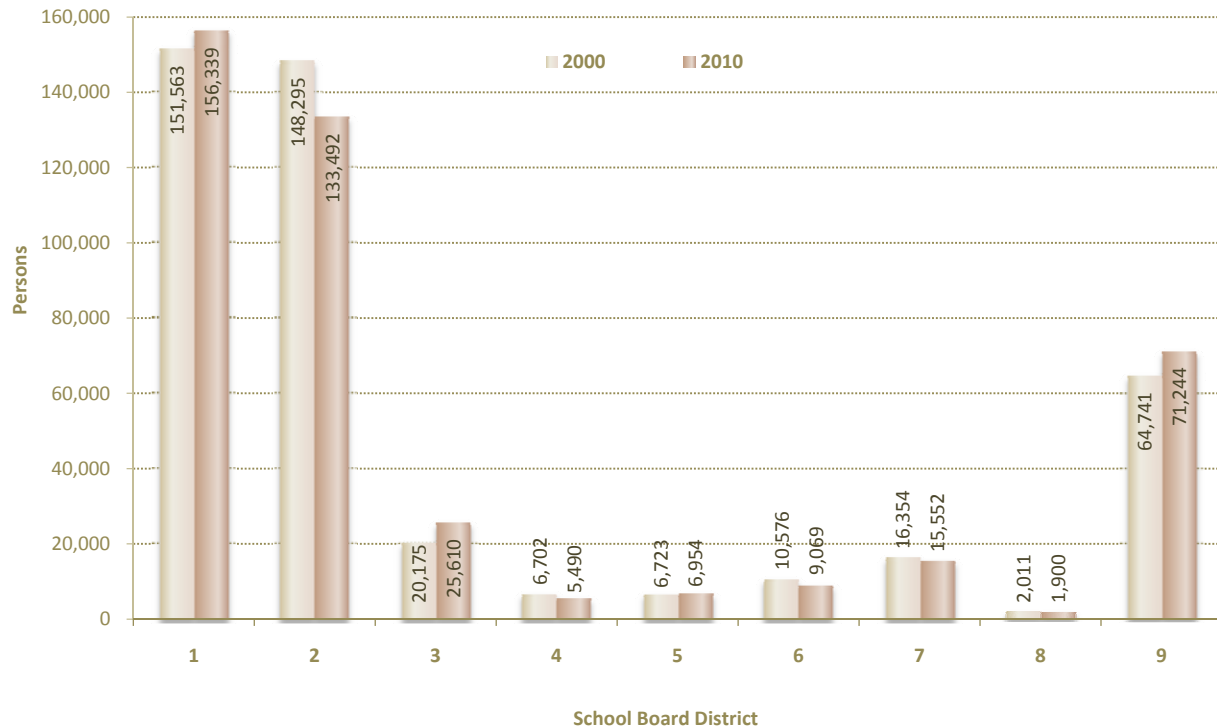


Source: U.S. Census Bureau, Decennial Census 2000 and Census 2010, PL 94-171, Miami-Dade County, Department of Planning and Zoning, Research Section, May 2011.

## Not Hispanic Blacks

During the period from 2000 to 2010 the Not Hispanic Black population showed a modest decrease of 0.3 percent, resulting in Not Hispanic Blacks accounting for 17.1 percent of the County population. At the individual school board level, four districts showed an increase in Not Hispanic Black persons. This varied from 3.2 percent in District 1 to 26.9 percent in District 3. On the other hand, five districts displayed decreases of Not Hispanic Blacks, with Districts 2, 4, and 6 declining by 10 percent or more. In District 2 there was a 10 percent decline in Not Hispanic Black persons, in numerical terms this amounted to a loss of 14,803, the largest of all districts.

**Figure 6.**  
**Not Hispanic Black Population,**  
**by School Board District, 2000 and 2010**



Source: U.S. Census Bureau, Decennial Census 2000 and Census 2010, PL 94-171, Miami-Dade County, Department of Planning and Zoning, Research Section, May 2011.

**Changes in District Shares**

While the Hispanic share in the total County population jumped from 57.3 percent in 2000 to 65 percent in 2010, the shares for Not Hispanic White and Not Hispanic Black declined to 15.4 and 17.1 percent respectively. The remaining 2.5 percent are Not Hispanic Others (see Tables 3 to 6). In terms of the number of persons, Not Hispanic Whites actually declined in by 82,221 since 2000, and Not Hispanic Blacks decreased by 1,490.

Figure 7 illustrates the increase in proportion of Hispanics in the total population of each school board district between 2000 and 2010. The largest gain was in District 9, from 38.4 percent Hispanics in 2000 to 53.2 percent in 2010, or an increase by 15 percentage points. While it grew the least during the period 2000 – 2010, the proportion of Hispanics in District 5 remained at 88.1 percent, the third highest of all school board districts.

The proportion of Not Hispanic Whites dropped across the board between 2000 and 2010. The most significant decrease was in District 9, from 31.9 percent in 2000 to 21.0 percent in 2010, or down by 11 percentage points. District 7 experienced a comparable decrease in proportion of Non Hispanic White population, down by 10 percentage points from 2000 to 2010.

**Figure 7.**  
**Race and Ethnicity, Change in Share of Total Population,**  
**by School Board District, 2000 - 2010**



Source: U.S. Census Bureau, Decennial Census 2000 and Census 2010, PL 94-171, Miami-Dade County, Department of Planning and Zoning, Research Section, April 2011.

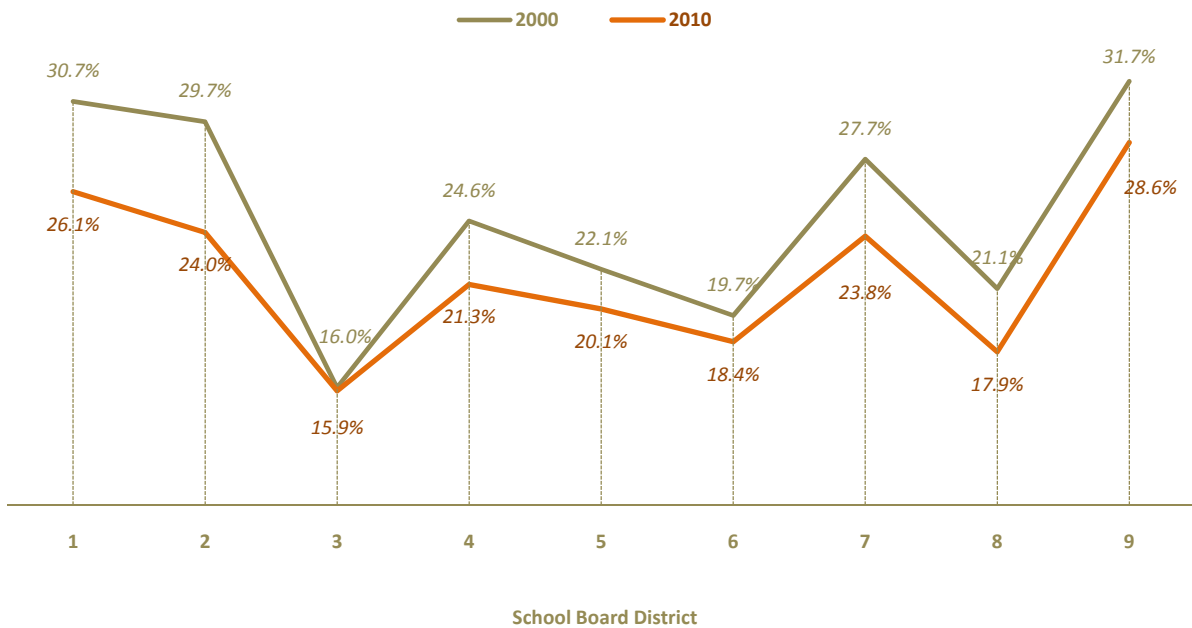
Unlike the changes in Hispanic or Non Hispanic White population that were sometimes large and always in the same direction for all districts, the changes in proportion of Non Hispanic Blacks tended to be much less pronounced and varied from one school board district to another. Districts 1, 3, 5, and 9 displayed increases varying from 3.2 percent in District 1 to 26.9 percent in District 3. The other five districts showed decreases of up to 18.1 percent as was the case for District 4. Despite the fact that the proportion of Non Hispanic Blacks in District 2 decreased by 5.9 percent, the largest decrease for all districts, Non Hispanic Blacks still remained a majority at 55.1 percent in 2010. The second most significant loss, in relative terms, of Black Non Hispanic population was in District 9, where the decrease was 3.4 percent. The share of Black Non Hispanics decreased by less than one percentage point in Districts 4, 5, 6 and 8 ,while in Districts 1 and 3 it actually increased.



## Persons Under 18 Years Old

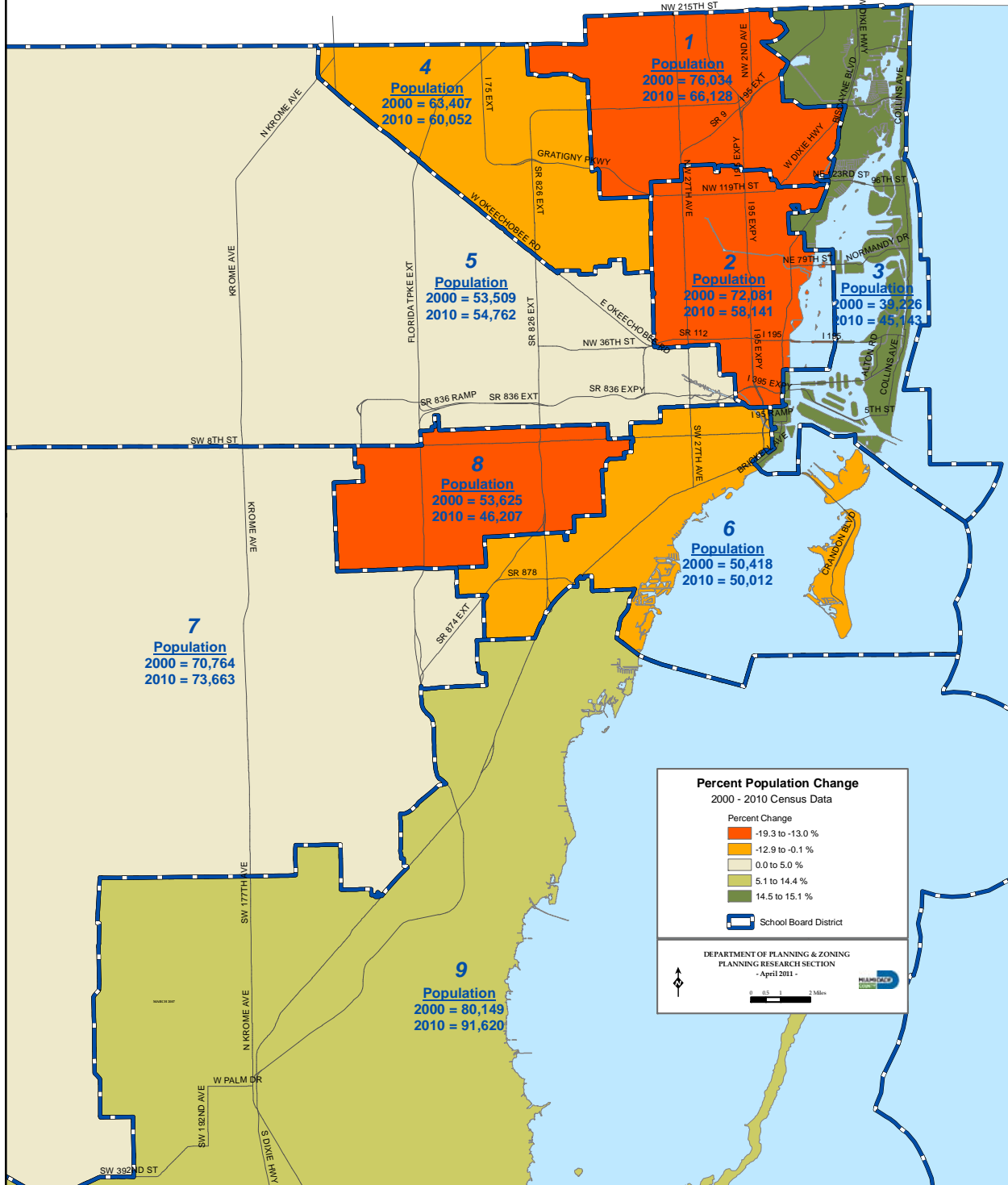
The Census 2010 data revealed a very important piece of information that appears to shed some light on the trends in school enrollment. Over the past decade the populations of persons under 18 in the County declined by 13,385 persons or 2.4 percent (see Table 7). Figure 8 shows these changes at the school board district level. Five of the nine school board districts experienced decreases, with three showing losses of at least 10 percent. District 2 had the largest loss of persons under 18, at 19.3 percent. Four districts displayed increases in the population under 18. Districts 3 and 9 had the largest increases at 15 percent and 14 percent, respectively (see Map 2).

**Figure 8.**  
Population Less Than 18 Years, Percent of Total Population,  
by School Board District, Miami-Dade County



Source: U.S. Census Bureau, Decennial Census 2000 and Census 2010, PL 94-171, Miami-Dade County, Department of Planning and Zoning, Research Section, May 2011.

**MAP 2.**  
**PERCENT POPULATION CHANGE FOR PERSONS LESS THAN 18 YEARS**  
**BY SCHOOL BOARD DISTRICT**  
 MIAMI-DADE COUNTY, FLORIDA  
 2000 - 2010



**Table 1.**  
**Total Population,**  
**by School Board District, Miami-Dade County**

School Board District	Number of Persons		Change, 2000 to 2010	
	2000	2010	Number	Percent
1	247,728	253,627	5,899	2.4%
2	243,057	242,436	-621	-0.3%
3	244,684	284,639	39,955	16.3%
4	258,078	281,713	23,635	9.2%
5	242,235	273,007	30,772	12.7%
6	255,682	272,169	16,487	6.4%
7	255,170	309,617	54,447	21.3%
8	254,134	258,743	4,609	1.8%
9	252,594	320,484	67,890	26.9%
Total	2,253,362	2,496,435	243,073	10.8%

Source: U.S. Census Bureau, Census 2000 and Census 2010 (Public Law 94-171). Miami-Dade County, Department of Planning and Zoning, Research Section, April 2011.

**Table 2.**  
**Population of Hispanic or Latino Origin,**  
**by School Board District, Miami-Dade County**

School Board District	Number of Persons		Change, 2000 to 2010	
	2000	2010	Number	Percent
1	63,936	76,842	12,906	20.2%
2	63,748	84,209	20,461	32.1%
3	98,075	130,961	32,886	33.5%
4	217,703	255,491	37,788	17.4%
5	203,894	240,493	36,599	18.0%
6	173,691	198,676	24,985	14.4%
7	164,565	237,555	72,990	44.4%
8	209,227	229,078	19,851	9.5%
9	96,898	170,554	73,656	76.0%
Total	1,291,737	1,623,859	332,122	25.7%

Source: U.S. Census Bureau, Census 2000 and Census 2010 (Public Law 94-171). Miami-Dade County, Department of Planning and Zoning, Research Section, April 2011.

**Table 3.**  
**Not Hispanic White Population,**  
**by School Board District, Miami-Dade County**

School Board District	Number of Persons		Change, 2000 to 2010	
	2000	2010	Number	Percent
1	22,200	13,305	-8,895	-40.1%
2	20,028	19,040	-988	-4.9%
3	116,469	116,724	255	0.2%
4	29,941	17,601	-12,340	-41.2%
5	27,335	21,376	-5,959	-21.8%
6	66,317	57,930	-8,387	-12.6%
7	63,489	45,633	-17,856	-28.1%
8	39,480	24,545	-14,935	-37.8%
9	80,513	67,397	-13,116	-16.3%
Total	465,772	383,551	-82,221	-17.7%

Source: U.S. Census Bureau, Census 2000 and Census 2010 (Public Law 94-171). Miami-Dade County, Department of Planning and Zoning, Research Section, April 2011.

**Table 4.**  
**Not Hispanic Black Population,**  
**by School Board District, Miami-Dade County**

School Board District	Number of Persons		Change, 2000 to 2010	
	2000	2010	Number	Percent
1	151,563	156,339	4,776	3.2%
2	148,295	133,492	-14,803	-10.0%
3	20,175	25,610	5,435	26.9%
4	6,702	5,490	-1,212	-18.1%
5	6,723	6,954	231	3.4%
6	10,576	9,069	-1,507	-14.2%
7	16,354	15,552	-802	-4.9%
8	2,011	1,900	-111	-5.5%
9	64,741	71,244	6,503	10.0%
Total	427,140	425,650	-1,490	-0.3%

Source: U.S. Census Bureau, Census 2000 and Census 2010 (Public Law 94-171). Miami-Dade County, Department of Planning and Zoning, Research Section, April 2011.

**Table 5.**  
**Not Hispanic Other,**  
**by School Board District, Miami-Dade County**

School Board District	Number of Persons		Change, 2000 to 2010	
	2000	2010	Number	Percent
1	10,029	7,141	-2,888	<b>-28.8%</b>
2	10,986	5,695	-5,291	<b>-48.2%</b>
3	9,965	11,344	1,379	13.8%
4	3,732	3,131	-601	<b>-16.1%</b>
5	4,283	4,184	-99	<b>-2.3%</b>
6	5,098	6,494	1,396	27.4%
7	10,762	10,877	115	1.1%
8	3,416	3,220	-196	<b>-5.7%</b>
9	10,442	11,289	847	8.1%
Total	68,713	63,375	-5,338	<b>-7.8%</b>

Source: U.S. Census Bureau, Census 2000 and Census 2010 (Public Law 94-171). Miami-Dade County, Department of Planning and Zoning, Research Section, April 2011.

**Table 6.**  
**Race and Ethnicity, Share in Total Population,**  
**by School Board District, Miami-Dade County**

School Board District	Hispanic or Latino			Not Hispanic White			Not Hispanic Black		
	2000	2010	Gain/ Loss	2000	2010	Gain/ Loss	2000	2010	Gain/ Loss
1	25.81%	30.30%	4.49%	8.96%	5.25%	<b>-3.72%</b>	61.18%	61.64%	0.46%
2	26.23%	34.73%	8.51%	8.24%	7.85%	<b>-0.39%</b>	61.01%	55.06%	<b>-5.95%</b>
3	40.08%	46.01%	5.93%	47.60%	41.01%	<b>-6.59%</b>	8.25%	9.00%	0.75%
4	84.36%	90.69%	6.34%	11.60%	6.25%	<b>-5.35%</b>	2.60%	1.95%	<b>-0.65%</b>
5	84.17%	88.09%	3.92%	11.28%	7.83%	<b>-3.45%</b>	2.78%	2.55%	<b>-0.23%</b>
6	67.93%	73.00%	5.06%	25.94%	21.28%	<b>-4.65%</b>	4.14%	3.33%	<b>-0.80%</b>
7	64.49%	76.73%	12.23%	24.88%	14.74%	<b>-10.14%</b>	6.41%	5.02%	<b>-1.39%</b>
8	82.33%	88.53%	6.21%	15.54%	9.49%	<b>-6.05%</b>	0.79%	0.73%	<b>-0.06%</b>
9	38.36%	53.22%	14.86%	31.87%	21.03%	<b>-10.84%</b>	25.63%	22.23%	<b>-3.40%</b>
Total	57.32%	65.05%	7.72%	20.67%	15.36%	<b>-5.31%</b>	18.96%	17.05%	<b>-1.91%</b>

Source: U.S. Census Bureau, Census 2000 and Census 2010 (Public Law 94-171). Miami-Dade County, Department of Planning and Zoning, Research Section, April 2011.

**Table 7.**  
**Population Under 18 years,**  
**by School Board District, Miami-Dade County**

School Board District	2000		2010		Change, 2000 to 2010	
	Number of Persons	Percent of total population	Number of Persons	Percent of total population	Number	Percent
1	76,034	30.7%	66,128	26.1%	-9,906	-13.0%
2	72,081	29.7%	58,141	24.0%	-13,940	-19.3%
3	39,226	16.0%	45,143	15.9%	5,917	15.1%
4	63,407	24.6%	60,052	21.3%	-3,355	-5.3%
5	53,509	22.1%	54,762	20.1%	1,253	2.3%
6	50,418	19.7%	50,012	18.4%	-406	-0.8%
7	70,764	27.7%	73,663	23.8%	2,899	4.1%
8	53,625	21.1%	46,207	17.9%	-7,418	-13.8%
9	80,149	31.7%	91,620	28.6%	11,471	14.3%
Total	559,213	24.8%	545,728	21.9%	-13,485	-2.4%

Source: U.S. Census Bureau, Census 2000 and Census 2010 (Public Law 94-171). Miami-Dade County, Department of Planning and Zoning, Research Section, April 2011.